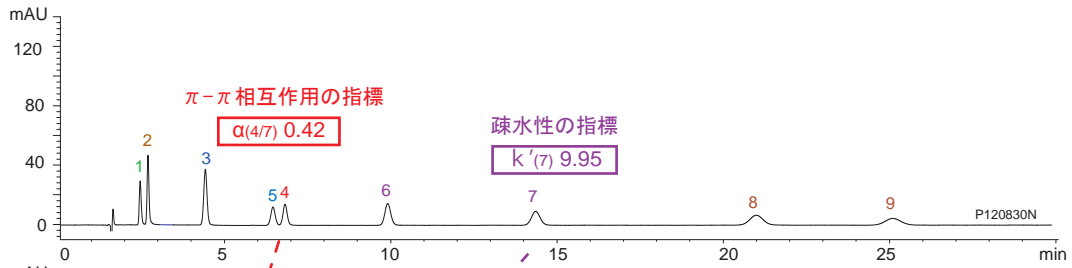
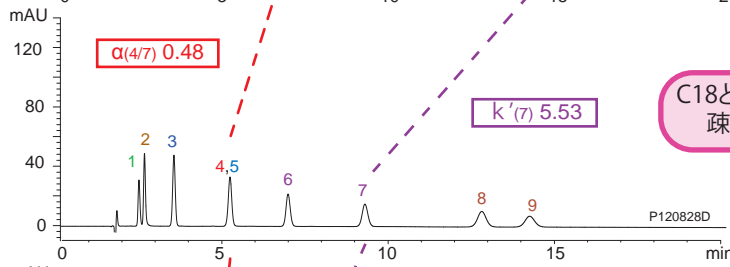


逆相カラムの分離選択性の比較

Triart C18

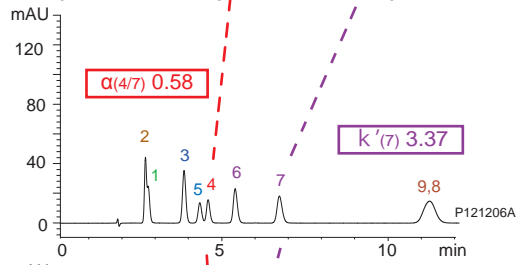


Triart C8



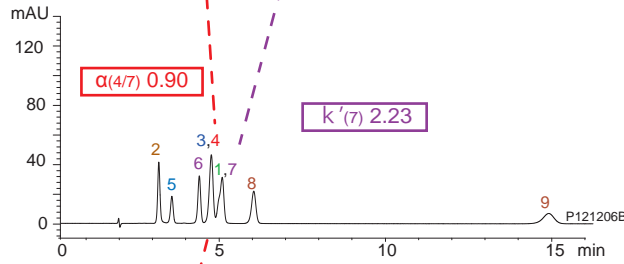
C18と類似した分離パターンで
疎水性化合物を早く溶出

Triart Phenyl

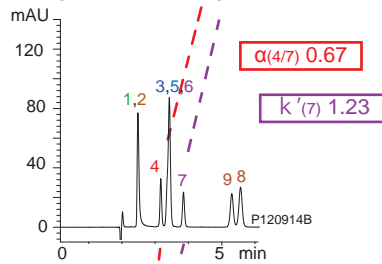


π-π相互作用により
C18やC8とは異なる分離選択性

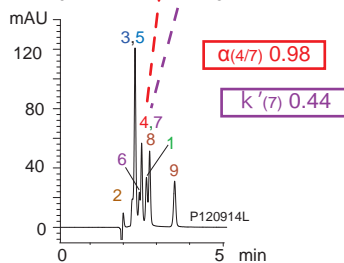
Triart PFP



YMC-Pack Ph



YMC-Pack CN



Column : 5 μm, 150 X 3.0 mm I.D.
 Eluent : 20 mM H₃PO₄-KH₂PO₄ (pH 3.1) / methanol (25/75)
 Flow rate : 0.425 mL/min
 Temperature : 40°C
 Detection : UV at 265 nm
 Injection : 4 μL

