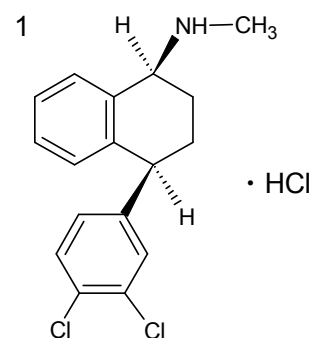
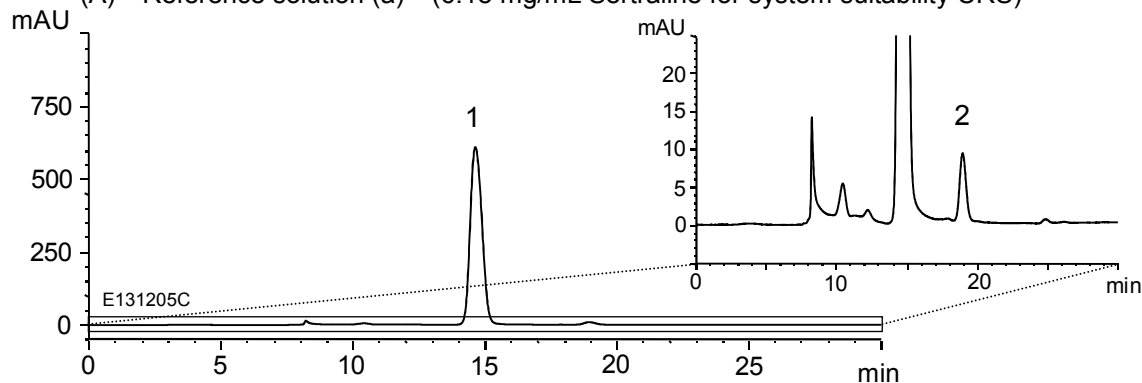


セルトラリン塩酸塩 (欧州薬局方記載条件)
Sertraline hydrochloride (The European Pharmacopoeia)

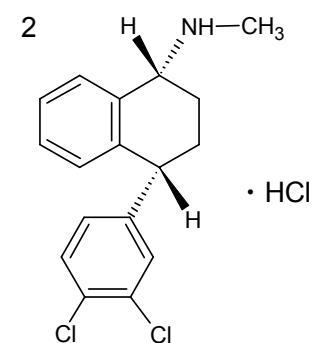
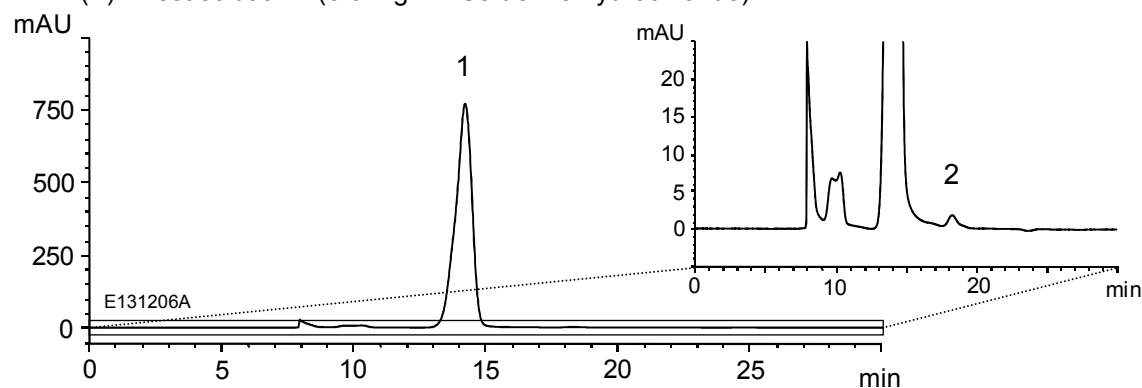
E131206B

(A) Reference solution (a)*¹ (6.18 mg/mL Sertraline for system suitability CRS)



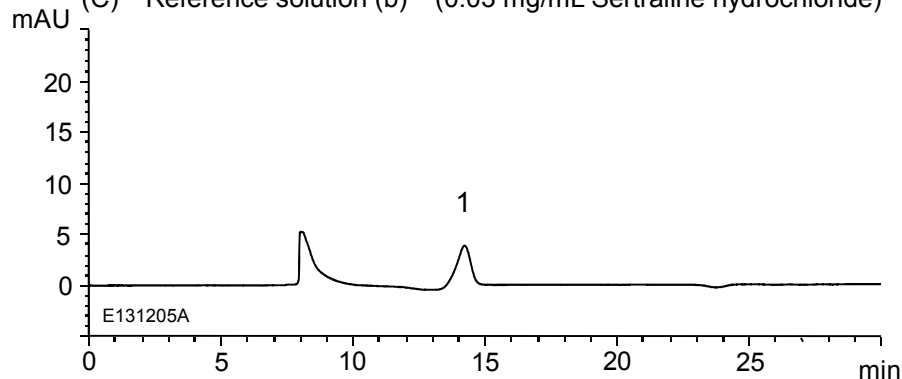
Sertraline hydrochloride

(B) Test solution*¹ (6.0 mg/mL Sertraline hydrochloride)



Sertraline hydrochloride
(enantiomer)

(C) Reference solution (b)*¹ (0.03 mg/mL Sertraline hydrochloride)



Column : YMC CHIRAL Amylose-C (5 μm)
250 X 4.6 mm I.D.
Eluent : mixture*²/n-hexane (70/30)
*² n-hexane/2-propanol/diethylamine (975/25/1)
Flow rate : 0.4 mL/min
Temperature : 25°C
Detection : UV at 275 nm
Injection : 20 μL

(The draft for The European Pharmacopoeia; Enantiomeric purity)

*¹ Test solution and Reference solution were prepared from Sertraline hydrochloride supplied as a reagent for laboratory use.