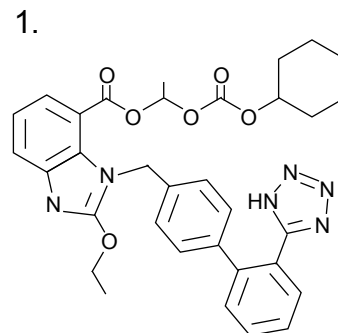
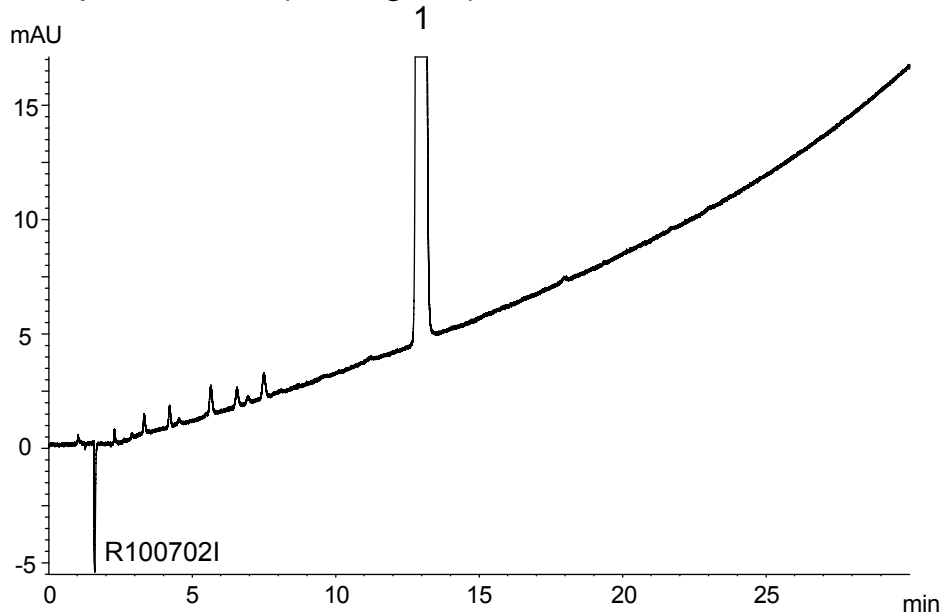


カンデサルタン シレキセチル

Candesartan cilexetil

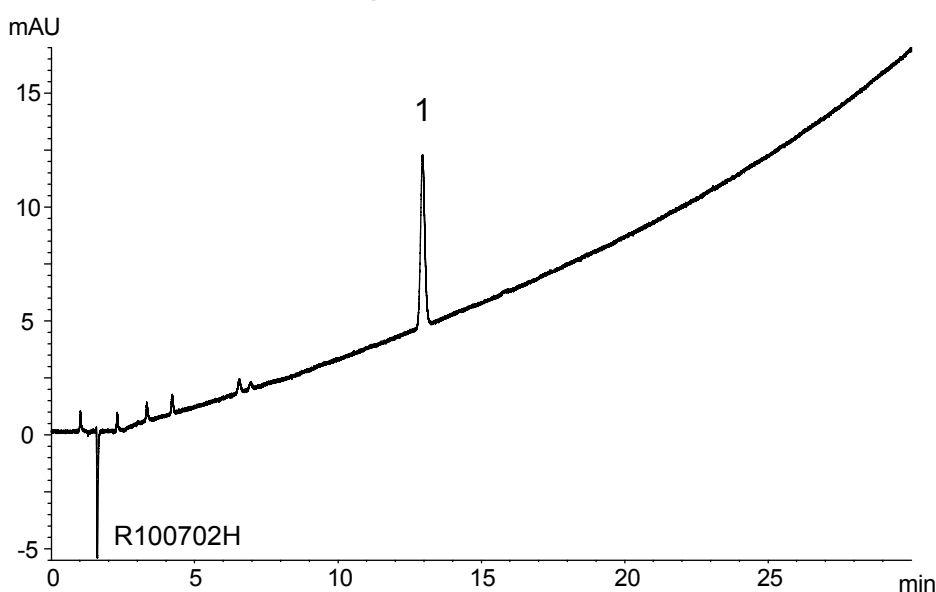
R100702O

Sample solution (0.4 mg/mL)



Candesartan cilexetil

Standard solution (4 μg/mL)



Column : J'sphere ODS-M80 (4 μm, 8 nm)
150 X 4.0 mm I.D.

Eluent : A) acetonitrile/water/acetic acid (57/43/1)
B) acetonitrile/water/acetic acid (90/10/1)
0-100%B (0-30 min)

Flow rate : 0.8 mL/min

Temperature : 25°C

Detection : UV at 254 nm

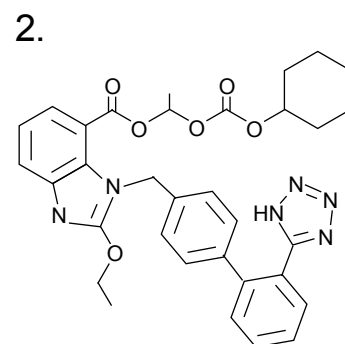
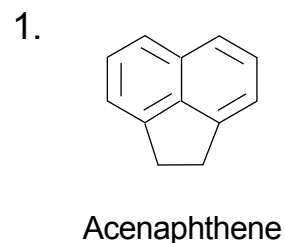
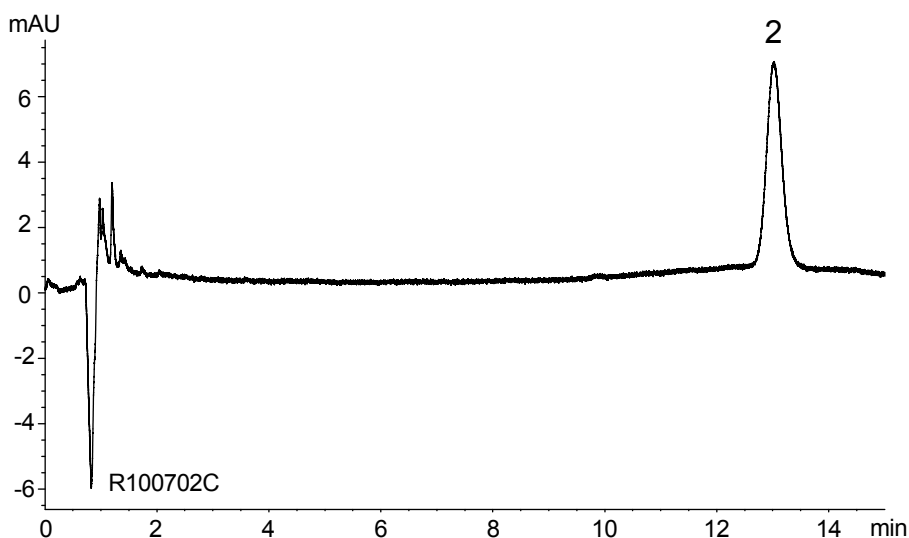
Injection : 10 μL

(日本薬局方収載原案記載条件; 純度試験)

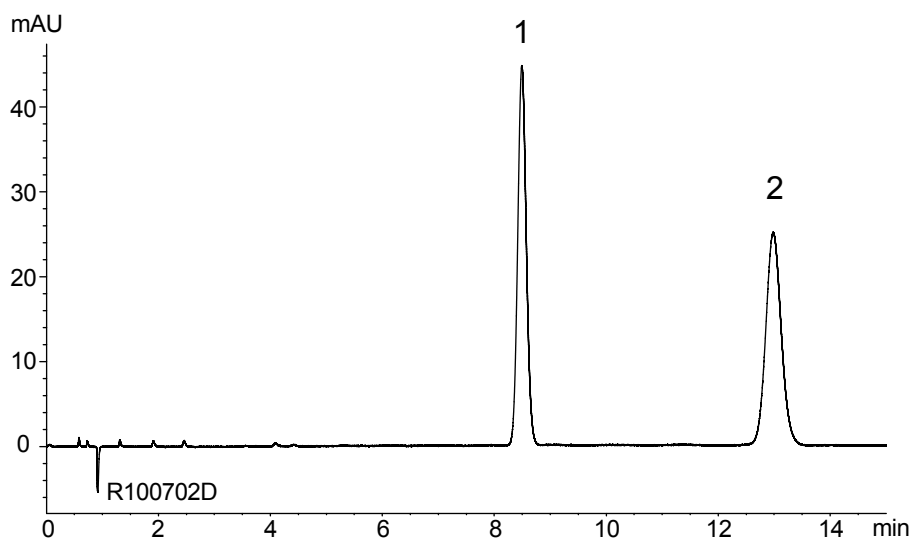
カンデサルタン シレキセチル錠
Candesartan cilexetil tablets

R100702P

Dissolution (2 μ g/mL, 50 μ L inj.)



Assay (0.125 mg/mL, 0.04 mg/mL, 10 μ L inj.)



Column : J'sphere ODS-M80 (4 μ m, 8 nm)
150 X 4.0 mm I.D.
Eluent : acetonitrile/water/acetic acid (57/43/1)
Flow rate : 1.4 mL/min
Temperature : 25°C
Detection : UV at 254 nm

(日本薬局方収載原案記載条件)