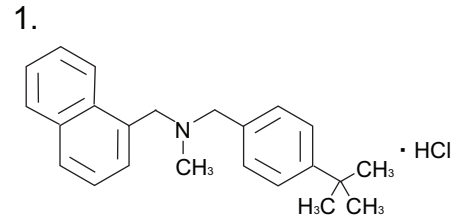
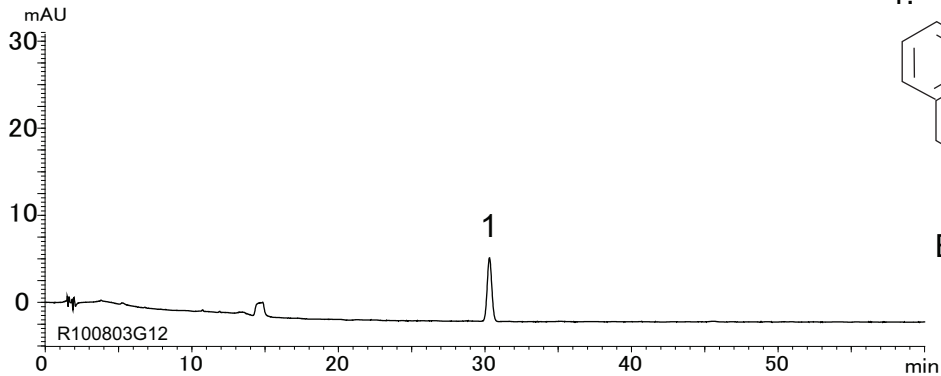


ブテナフィン塩酸塩  
Butenafine hydrochloride

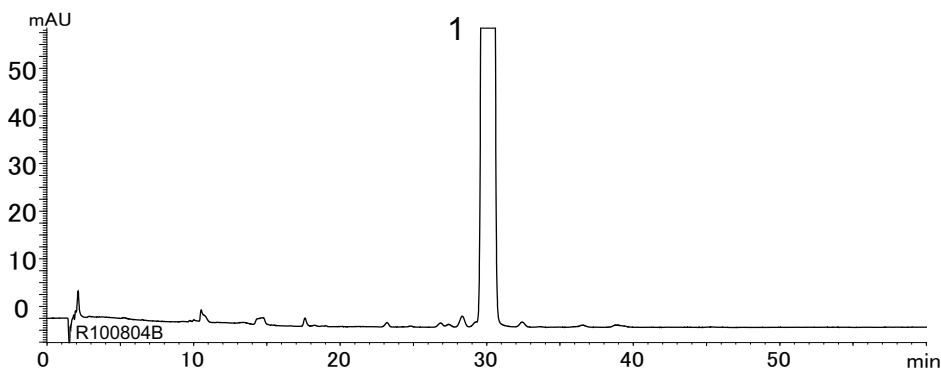
R101005O

Commercially available reagent  
(0.6 μg/mL, correspond to purity standard solution)

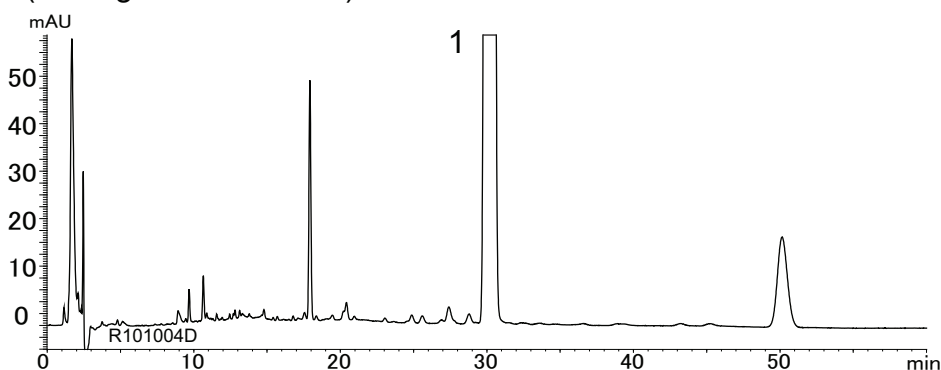


Butenafine hydrochloride

Commercially available reagent  
(0.6 mg/mL, correspond to purity sample solution)



Butenafine cream methanol extract  
(0.6 mg/mL butenafine)



Column : YMC-Triart C18 (3 μm, 12 nm)  
150 X 3.0 mm I.D.  
Eluent : A) 0.5 mM CH<sub>3</sub>COONH<sub>4</sub>  
B) acetonitrile  
40-80%B (0-10 min), 80%B (10-60 min)  
Flow rate : 0.4 mL/min  
Temperature : 40°C  
Detection : UV at 217 nm  
Injection : 10 μL

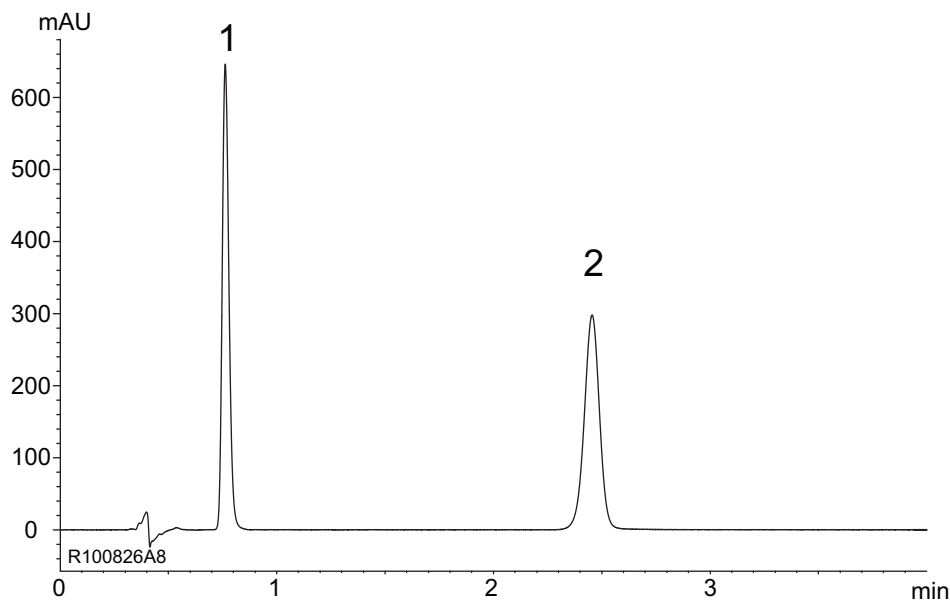
(日本薬局方収載原案記載条件)

ブテナフィン塩酸塩液・スプレー・クリーム

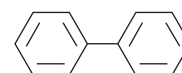
Butenafine hydrochloride solution and spray and cream

R100830A

Comercially available reagent  
(0.5, 0.17 mg/mL, correspond to standard solution  
for butenafine hydrochloride cream)

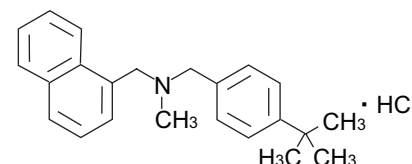


1.



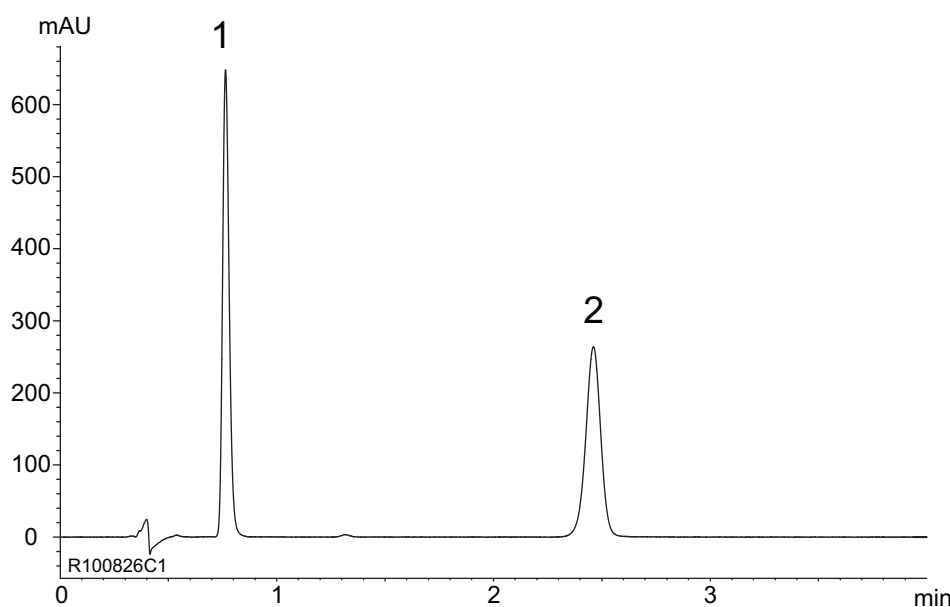
Diphenyl (I.S.)

2.



Butenafine hydrochloride

Sample solution for butenafine hydrochloride cream



Column : YMC-Pack Pro C8 (3  $\mu$ m, 12 nm)  
50 X 3.0 mm I.D.

Eluent : 1 mM CH<sub>3</sub>COONH<sub>4</sub>/acetonitrile (1/4)

Flow rate : 0.7 mL/min (adjust the flow rate so that the retention time of butenafine is about 2.5 min)

Temperature : 40°C

Detection : UV at 282 nm

Injection : 5  $\mu$ L

(日本薬局方収載原案記載条件)